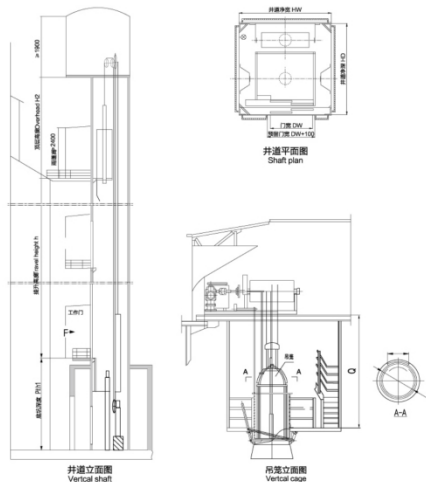


# 防爆气柜标准土建布置图

Explosion Proof Gas Elevator Standard layout



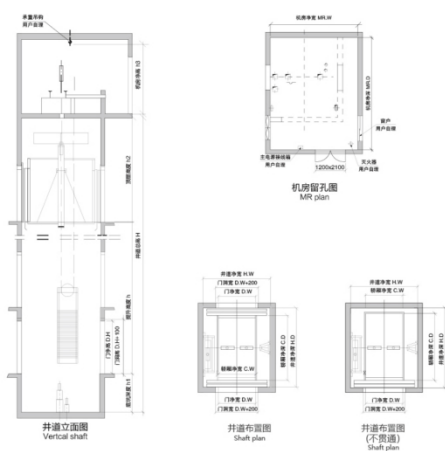
| 额定载重量<br>(kg)<br>Rated Load | 速度<br>(m/s)<br>Speed | 轿厢尺寸<br>(mm)<br>Car Size<br>C.WxHxD | 开门尺寸<br>(mm)<br>Door Opening<br>D.WxD.H | 井道尺寸<br>(mm)<br>Shaft Net Size<br>H.WxH.D | 底坑深度 h1<br>(mm)<br>Pit Depth | 顶层高度 h2<br>(mm)<br>Overhead Height |
|-----------------------------|----------------------|-------------------------------------|---|---|------------------------------|------------------------------------|
| 500                         | 0.5                  | 1400x1000x2200                      | 700x2100                                | 1950x1750                                 | 4000                         | 4500                               |
|                             |                      | 1000x950x2200                       |   | 1550x1550                                 |                              |                                    |
| 用途<br>Cage                  | 开门方式<br>Opening Type | 载重量<br>(kg)<br>Loading Capacity     | 速度<br>(m/s)<br>Speed                    | 直径<br>Diameter<br>D                       | 门宽<br>Door width<br>F        | 顶层高<br>Over head<br>G              |
|                             | 侧门<br>Side Door      | 250                                 | 0.3                                     | 1000                                      | 700                          | 4000                               |

(本资料仅供参考, 详细参数以技术图纸为准。)

The data is for design reference only. For the detailed parameters, please take the technical drawing as the criterion.

# IP电梯标准土建布置图

IP Cargo Elevator Standard layout



| 额定载重量<br>(kg)<br>Rated Load | 速度<br>(m/s)<br>Speed | 轿厢尺寸<br>(mm)<br>C.WxHxDxH | 开门尺寸 (mm)<br>D.WxD.H |            | 井道净尺寸 (mm)<br>H.WxH.D |                | 机房净尺寸 (mm)<br>MR.WxMR.DxH |              | 底坑深度<br>h1<br>(mm) | 顶层高度<br>h2<br>(mm) |
|-----------------------------|----------------------|---------------------------|----------------------|------------|-----------------------|----------------|---------------------------|--------------|--------------------|--------------------|
|                             |                      |                           | 双开门<br>ACO           | 后中分<br>ACO | 单梯<br>Single          | 双梯<br>Double   | 单梯<br>Single              | 双梯<br>Double |                    |                    |
| 1000                        | 0.5                  | 1300x1750x2200            | 1300x2100            | 2400x2230  | 5050x2230             | 3100x3800x2800 | 6500x3800x2800            | 1500         | 4300               | 4500               |
|                             | 1.0                  | 1500x2250x2200            |                      |            |                       |                |                           |              |                    |                    |
| 1600                        | 0.5                  | 1500x2250x2200            | 1500x2100            | 2750x2840  | 5750x2840             | 3500x4000x2800 | 6500x4000x2800            | 1600         | 4300               | 4500               |
|                             | 1.0                  | 1500x2250x2200            |                      |            |                       |                |                           |              |                    |                    |
| 2000                        | 0.5                  | 1500x2700x2200            | 1500x2100            | 2750x3290  | 5750x3290             | 3500x4500x2800 | 6500x4500x2800            | 1600         | 4300               | 4500               |
|                             | 1.0                  | 1500x2700x2200            |                      |            |                       |                |                           |              |                    |                    |
| 3000                        | 0.5                  | 2200x2400x2400            | 2200x2400            | 3600x3190  | 7450x3190             | 4500x4900x2800 | 8000x4900x2800            | 1700         | 4500               | 4500               |
|                             | 1.0                  | 2400x3600x2400            |                      |            |                       |                |                           |              |                    |                    |
| 5000                        | 0.25                 | 2400x3600x2400            | 2400x2400            | 4200x4190  | 8650x4190             | 5000x5500x2800 | 9000x5500x2800            | 1700         | 4500               | 4500               |
|                             | 0.5                  | 2400x3600x2400            |                      |            |                       |                |                           |              |                    |                    |

(本资料仅供参考, 详细参数以技术图纸为准。)

The data is for design reference only. For the detailed parameters, please take the technical drawing as the criterion.